

JFK Middle School

Special Education Service Delivery

A problem presents itself

1. Imbalanced numbers in co-taught classes
2. Service hours increase substantially from elementary to middle school
3. Seemingly arbitrary recommendations for restricted environments for students

Systems Issue

7 period schedule – 45
minute periods

Four teams per grade

Teams consist of four
core content teachers and
one special ed teacher

Special education teacher
supports one section of
each co-taught English,
co-taught Math, co-taught
Science, co-taught Social
Studies

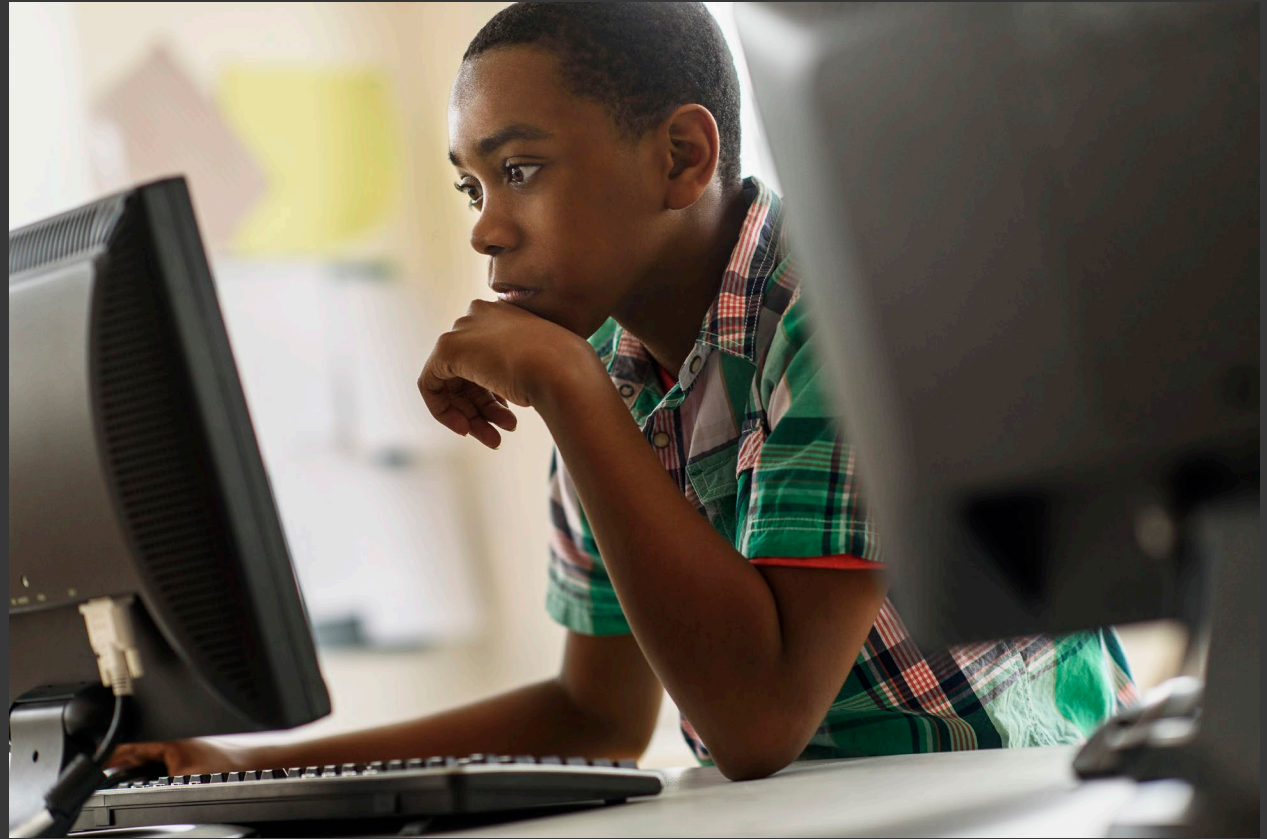
The Numbers

	Grade 5 (6)		Grade 6 (7)		Grade 7 (8)	
Subject	Number of Course Requests	Needed Number of Sections	Number of Course Requests	Needed Number of Sections	Number of Course Requests	Needed Number of Sections
CoT English	TBD	TBD	58	5.8	39	3.9
CoT Math	TBD	TBD	51	5.1	36	3.6
CoT Science	45*	4.5	45	4.5	54	5.4
CoT Social Studies	45*	4.5	45	4.5	54	5.4
Support	TBD	TBD	63	6.3	34	3.4

Resource Room Numbers

Subject	Grade 5 (6)		Grade 6 (7)		Grade 7 (8)	
	Number of Course Requests	Needed Number of Sections	Number of Course Requests	Needed Number of Sections	Number of Course Requests	Needed Number of Sections
RR English	TBD	TBD	21	3	15	2.4
RR Math	TBD	TBD	28	4	18	2.57
RR Reading	TBD	TBD	23	3.29	20	2.86

Equity and
data based
decisions



A Paradigm Shift

- Develop a framework to evolve my committee to include more stakeholders
- Solicit allies within general education staff
- Research training on differentiated instruction